



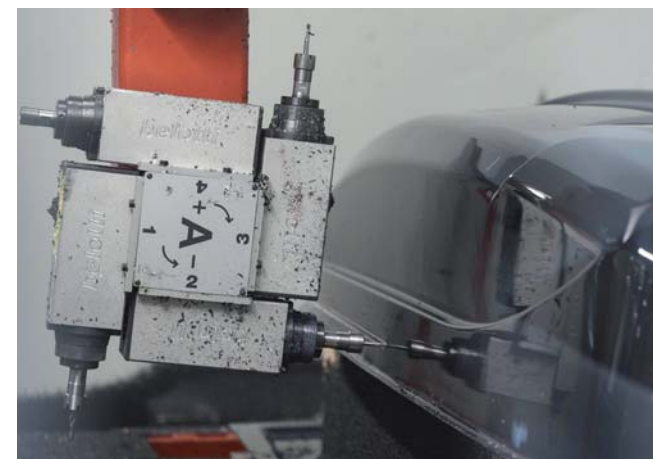
MODULA
INDUSTRY

ENGLISH VERSION



Modula SRL is a dynamic company specialized in plastic processing and manufacturing of components for industry. Since its establishment in 2001, the company has experienced a constant expansion thanks to a dynamic and flexible attitude together with the ability to “see” the specific need of each customer by providing tailor-made solutions and a complete service in every respect, from design to realization and assembly, to the delivery of the finished product.

The company’s high level of expertise makes it possible to meet even the most demanding requirements and to obtain finished products ready for assembly in a very short time. Modula’s constant evolution and ability to develop complex projects has generated a constant collaboration with the major industrial groups and the internationally renowned designers.



| | | MODULA | GRUPPO EPTA |
|----------------|------|-------------------|--------------------|
| REVENUES 2024 | Euro | 26.000.000 | 260.000.000 |
| EMPLOYEES | Nr. | 145 | 640 |
| COVERED AREA | Mq | 22.500 | 60.000 |
| UNCOVERED AREA | Mq | 18.000 | |
| OFFICE AREA | Mq | 1.450 | |

MODULA IS PART OF A MULTINATIONAL GROUP: EPTA GRUPPO.

MAJOR COMPANIES



IRRIGATION MACHINES
WATER MANAGEMENT SYSTEMS
www.idrofoglia.com



GENERATING SETS
AND WELDING MACHINES
www.greenpowergen.com



MOULDING OF PLASTIC MATERIALS
AND DESIGN SOLUTIONS
www.modulasrl.it

FURTHER COMPANIES



METAL INDUSTRIAL
COATING AND
SANDBLASTING
www.metalcolorlunano.it



SYSTEMS FOR ZOOTECHNICAL
WASTE, FOOD WASTE AND
DIGESTATE TREATMENT
www.biomodil.com



INTERNATIONAL BUSINESS
MANAGEMENT AND
SERVICE SOLUTIONS
www.eptatrade.it



IRRIGATION SYSTEMS AND
POWER GENERATORS
SHOWROOM
www.eptafrance.fr



BIKE CARRIERS, ROOF BOXES,
AUTOMOTIVE SOLUTIONS
www.fabbri.info



HANDCRAFTED ITALIAN
WOOD OVENS SINCE 1982
www.tranquilliforni.it

BRANDS



ROOF BOXES AND
AUTOMOTIVE SOLUTIONS
www.modulacs.com



LIGHTING TOWERS AND
MOBILE LIGHTING SOLUTIONS
www.auroralightingtowers.com



LIFTING SYSTEMS
AND ENGINEERING SOLUTIONS
www.ironsystem.it



POWER AND WATER
FOR YOUR WORKS
www.eptamachinery.com



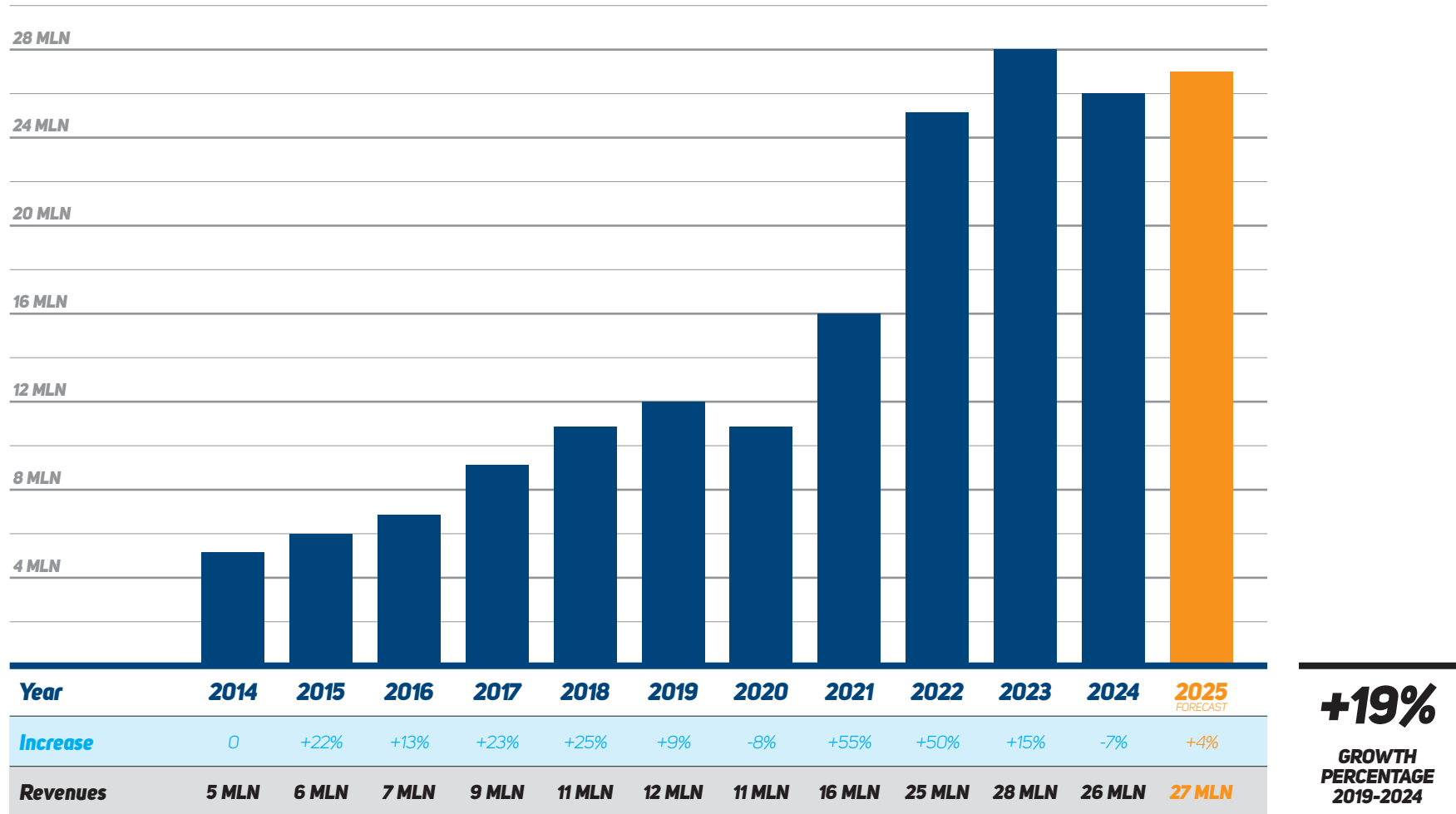
PRODUCTS AND SOLUTIONS
FOR EMERGENCY
www.greenpowergen.com



PRODUCTS AND SOLUTIONS
FOR SOLAR ENERGY
www.greenpowergen.com



MODULA REVENUES 2024: EURO 26 MLN.





CENTRAL TUNNEL CONTROL PANEL

Materials: Scratch-resistant textured ABS plastic

Technology: Vacuum printing, CNC cutting, commercial component assembly

Target sector: interior cabin equipment



CONTROL PANEL

Materials: Scratch-resistant textured ABS plastic

Technology: vacuum printing, CNC cutting, air-conditioning duct assembly

Target sector: interior cabin equipment



COVERED CABIN ROOF INTERIOR

Materials: ABS coated with class VO fabric (UL94)

Technology: vacuum printing, CNC cutting, VO fabric application

Target sector: interior cabin equipment



STRUCTURAL ENGINE HOOD

Materials: UV-resistant and scratch-resistant ABS and PMMA plastic, steel structure

Technology: vacuum printing, CNC cutting, assembly of commercial and custom components

Target sector: earth-moving machineries



ARMREST FOR HANDLING MACHINERY

Materials: Scratch-resistant textured ABS plastic

Technology: vacuum printing, CNC cutting, reinforcement component assembly

Target sector: Handling machines



FRONT GRILLE

Materials: Scratch-resistant textured ABS plastic

Technology: vacuum printing, CNC cutting

Target sector: Utility Vehicles



CONTROL PANEL

Material: ABS plastic

Technology: vacuum printing, CNC cutting, assembly of completion components

Target sector: industrial vehicles



CONTROL PANEL

Materials: UV and scratch resistant ABS+PMMA plastic

Technology: vacuum printing, CNC cutting, air conditioning duct assembly

Target sector: interior cabin equipment



CONTROL PANEL

Materials: two-tone anti-scratch textured ABS plastic

Technology: vacuum printing, CNC cutting, instrument panel and air-conditioning duct assembly

Target sector: interior cabin equipment



COATED CABIN ROOF INTERIOR

Materials: anti-scratch textured ABS plastic

Technology: vacuum printing, CNC cutting, air-conditioning duct assembly and commercial component assembly

Target sector: interior cabin equipment



COATED CABIN ROOF INTERIOR

Materials: ABS plastic coated with class VO fabric (UL94)

Technology: vacuum printing, CNC cutting, VO fabric application, air-conditioning duct assembly

Target sector: interior cabin equipment



CABIN ROOF

Materials: ABS + PMMA plastic with scratch-resistant glossy surface

Technology: vacuum printing, CNC cutting, component and accessory assembly

Target sector: earth-moving machineries



TWO-TONE DASHBOARD

Materials: scratch-resistant textured ABS plastic

Technology: vacuum printing, CNC cutting, assembly and gluing of air-conditioning ducts and accessory components

Target sector: earth-moving machineries



SIDE CONTROL PANEL

Materials: scratch-resistant textured ABS plastic

Technology: vacuum printing, CNC cutting, assembly and gluing

Target sector: earth-moving machinery



FENDERS COMPONENTS

Materials: Textured HDPE

Technology: vacuum printing, CNC cutting, metal reinforcement assembly

Target sector: industrial vehicles



STRUCTURAL ENGINE HOOD

Materials: ABS + PMMA plastic and BLEND reinforcement, sound absorbing, metal mesh and structural frame

Technology: vacuum printing, CNC cutting, frame assembly and commercial component assembly

Target sector: earth-moving machineries



STRUCTURAL ENGINE HOOD

Materials: ABS + PMMA plastic and BLEND reinforcement, sound absorbing, metal mesh and structural frame

Technology: vacuum printing, CNC cutting, frame assembly and commercial component assembly

Target sector: earth-moving machineries



STRUCTURAL ENGINE HOOD

Materials: ABS + PMMA plastic and BLEND reinforcement, sound absorbing, metal mesh and structural frame

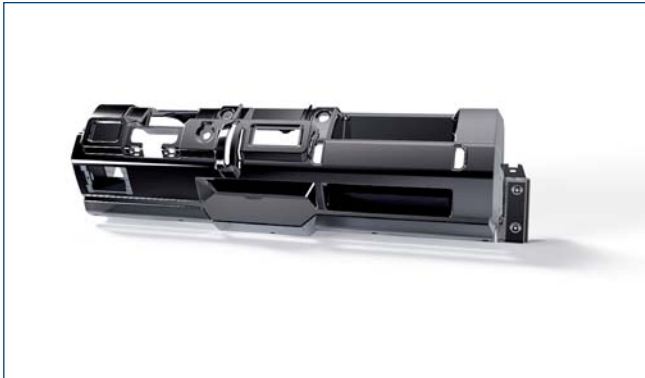
Technology: vacuum printing, CNC cutting, frame assembly and commercial component assembly

Target sector: earth-moving machineries



STRUCTURAL ENGINE HOOD

Materials: ABS + PMMA plastic and BLEND reinforcement, sound absorbing, metal mesh and structural frame
Technology: vacuum printing, CNC cutting, frame assembly and commercial component assembly
Target sector: earth-moving machineries



CONTROL PANEL

Materials: scratch-resistant textured ABS plastic
Technology: vacuum printing, CNC cutting, air-conditioning conditioner duct assembly
Target sector: UTV vehicles



STRUCTURAL ENGINE HOOD

Materials: ABS + PMMA plastic and BLEND reinforcement, sound absorbing, metal mesh and structural frame
Technology: vacuum printing, CNC cutting, structural component assembly
Target sector: earth-moving machineries



CONCRETE PLANT COVER

Materials: PE HD + ABS
Technology: Rotational Moulding + Vacuum Printing
Target sector: Construction equipment



ENGINE HOOD

Materials: ABS+PMMA + PU +GFRP
Technology: Vacuum Printing + S-RIM
Target sector: Agricultural machinery and construction equipment



PU CARPET

Materials: PU
Technology: Low Pressure Moulding
Target sector: Cabins for construction machinery



WHO

Modula srl:
A company specialized in plastic processing

Toyota Motor Europe:
The European division of
TOYOTA MOTOR CORPORATION

WHAT

A COLLABORATION TO EQUIP ELECTRIC VEHICLES FOR THE 2024 PARIS OLYMPICS, REALIZED IN TWO VERSIONS:

Mobility version:
For the transport of athletes and officials

Emergency version:
For emergency interventions

HOW

Operational and Production Methods:
Oriented towards Kaizen and Lean Six Sigma methods

Technologies:
Vacuum Thermoforming, 3D printing, gluing, 3D scanning, painting

Materials:
Lightweight, recyclable, sustainable, UV resistant and high aesthetic yield

Team:
An international team that managed the entire lifecycle of the project



Established in 2010, **Modula Case System**, brand of Modula SRL, offers products which are the result of the company's production experience and know-how: roof boxes, roof bars, bike racks and other car accessories. Singular innovative design, quality, attention to details and constant research in new technologies and materials are Modula's strength which allows the company to be positioned on the medium-high market range.



Modula Case System, all the pleasure of travelling.
www.modulacs.com



Member of CISQ Federation



CERTIFIED MANAGEMENT SYSTEM
ISO 9001 - ISO 14001
ISO 45001

Through UNI EN ISO certifications for the supervision of quality standards and environmental protection, Modula SRL assures its customers a more efficient service day after day and, at the same time, commits to reduce all critical environmental impacts.

As a guarantee for our high-quality standards, design, production and customer service comply with the UNI EN ISO 9001:2015, UNI EN ISO 14001:2015 and UNI EN ISO 45001:2018 certifications.

MODULA SRL is the innovative and ecologically responsible company that will make your project reality.





Cribis Prime Company evaluates the highest reliability level of a company, issuing its own certificates to companies that constantly maintain a high commercial reliability. The parameters are evaluated according to the Cribis D&B Rating, a dynamic and constantly updated indicator that measures the commercial credibility and customer loyalty of a company.

Modula SRL obtained this prestigious recognition on the basis of numerous variables such as business historicity, balance sheet data and extreme punctuality in payments consolidating itself as one of the most reliable and credible companies on the market.

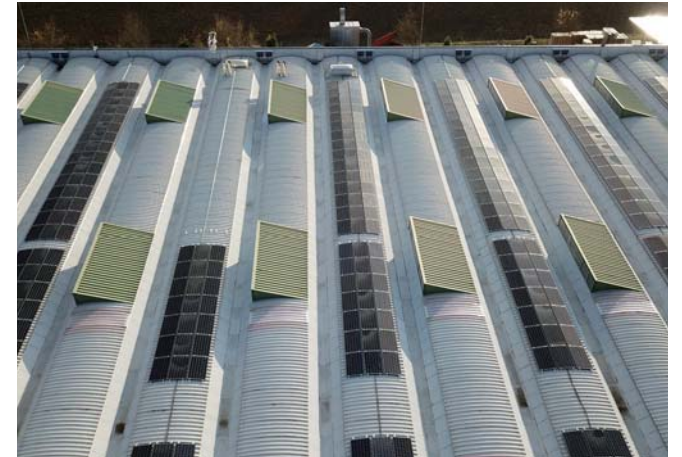


Modula's expertise and its constant investment in technologies and machineries allow one of the widest range of raw materials and manufacture processes to be processed professionally and with competence, such as:

- | | |
|-------------------------|---------------------------------|
| ABS - | - Fireproof or certified |
| PST - | self-extinguishing ABS |
| PEHD - | - ABS/PC |
| PETG - | - TPU |
| PMMA - | - PE |
| Polycarbonate - | - PP |
| Abs soft touch - | |

PET

Row material available in different colors and with different surface finishes, made by the best sheet processors in Europe.



In Modula we are particularly sensitive to environmental issues and invest many resources to reduce our environmental impact as much as possible and make our contribution to safeguarding the planet and its future:

- ***By recovering all waste plastic materials, which are regenerated and reintroduced into the production cycle, creating a virtuous recycling-and-reuse circle.***
- ***By adopting a policy for packaging and consumable disposal and recycling, differentiating each type of waste and directing it into the right channel for disposal and reuse: from cardboard to wood, from plastic films to special waste; everything is placed in appropriate containers and sent to the appropriate recycling channel.***
- ***By installing a large photovoltaic system that ensures us energy autonomy: all our energy consumption comes from zero-carbon-emission renewable sources.***

VERTICAL INTEGRATION

All steps in the creative and production process are managed completely by Modula.



OPTIMIZATION



Modula has the ability to optimize time to prototype a project and production lead time.

Having a large stock of raw materials available allows an efficient management of production departments, with a significant reduction in costs, that translates in more competitiveness.

CUSTOMER SERVICES



1 PROJECT ANALYSIS AND PROTOTYPING

The goal is to put all our experience and know-how at the service of the customer so as to offer them the best technical solution. Through careful planning of development activities, our team is able to propose a design oriented to:

- . Cost reduction*
- . Optimization of industrial processes*
- . Maintaining the required quality standards*
- . Reliability and Repeatability of products*

Target: Minimize and anticipate any feasibility issues.

CUSTOMER SERVICES



2 LOGISTIC MANAGEMENT

Modula uses cutting-edge advanced management models such as MRP (MATERIAL REQUIREMENT PLANNING), which allows constant monitoring of supplies and stock management according to the FIFO (First In First Out) method, a dedicated layout to optimize storage spaces, which translates to:

- Reduction of delivery costs and time for the customer
- Modular delivery batches according to customer planning
- Timely management of production changes between one delivery and the next one

The level reached in the optimization of material handling allows Modula to be able to manage satisfactorily the most modern iteration protocols with customers:

- Kanban,
- Just in time,
- Forecast,
- Integrated logistic

CUSTOMER SERVICES



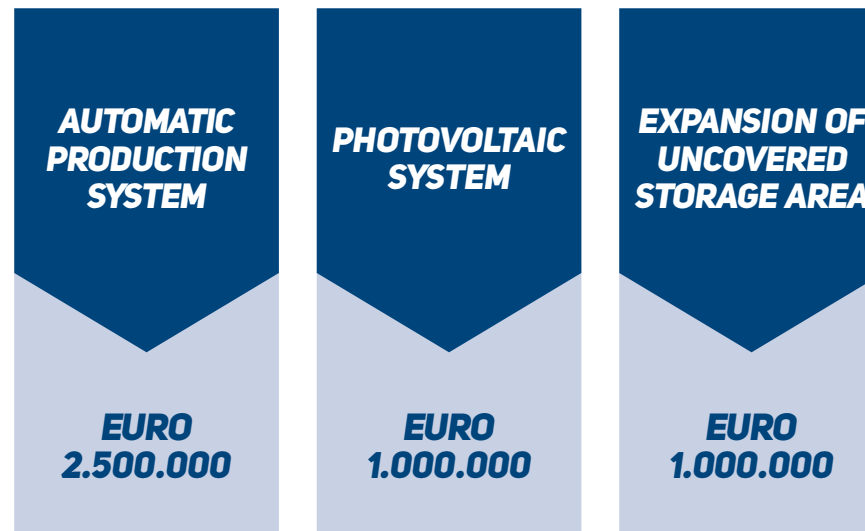
3 SPECIAL PACKAGING

The storage and transport of some materials may require the use of special designed supports: at Modula, each package is studied in agreement with the customer in order to find the best solution for the safe transport of the finished product.

- . Ad hoc designed supports
- . Safe transport of the finished product
- . Reusable and foldable packaging to reduce empty footprint
- . Direct use on production lines
- . Reduction of cardboard packaging and disposal issues

INVESTMENTS

In the last 3 years, Modula invested more than Euro 4.5 MLN in new machine-ries and facilities to improve the service for its customers.





All Modula staff, starting from the commercial and managing departments, to our technicians and logistic experts, has as main goal customer satisfaction. All your requests and inquiries will be evaluated with highest willingness, professionalism, rapidity and politeness.



GRESINI RACING TEAM MOTOGP



GRESINI RACING TEAM MOTOGP



GRESINI RACING TEAM MOTOGP

Since 2022 Modula SRL has been present on the MotoGP stage with the Modula Case System brand, a leading brand in the automotive and sport scene and manufacturer of roof boxes, bike racks and car accessories. For the past three seasons, its name has been linked to the Italian Gresini Racing team as the official sponsor of Team Gresini Racing MotoGP.



MotoGP www.motogp.com





MODULA SRL

Loc. Penisola 20/A – 61026

Piandimeleto (PU) – Italy

phone: +39 0722 700070

fax: +39 0722 720017

www.modulasrl.it

modulasrl@modulasrl.it

